



RV Aranda

CRUISE PLAN

Combine 3 Leg 2 GOF, 7/2021

10. - 14.8.2021

Description of the cruise

Monitoring of general hydrography, nutrients, chlorophyll and phyto- and zooplankton of the Baltic Sea according to HELCOM COMBINE program and sampling of phycotoxins and hazardous substances from the sediment. Maintenance work will be done for wave buoys and mussel cages will be lifted up for biomarker monitoring. Leg 2 has special emphasis on Gulf of Finland.

Scientific staff:

Chief scientist:	Maiju Lehtiniemi	SYKE
CTD chief:		FMI
Chief chemist:		SYKE
		SYKE
		FMI
		SYKE
		SYKE
		SYKE
		SYKE
		SYKE
		SYKE
		FMI
		GTK
		GTK
		SYKE
		Novia
		Novia
		SYKE
		YLE
		YLE

Altogether 21 persons in scientific staff.

Departure from: HANKO
Departure time: Tuesday 10.08.2021 at 21.00

Cruising speed: 10,0 knots
Average station time: 2 h 0 min.

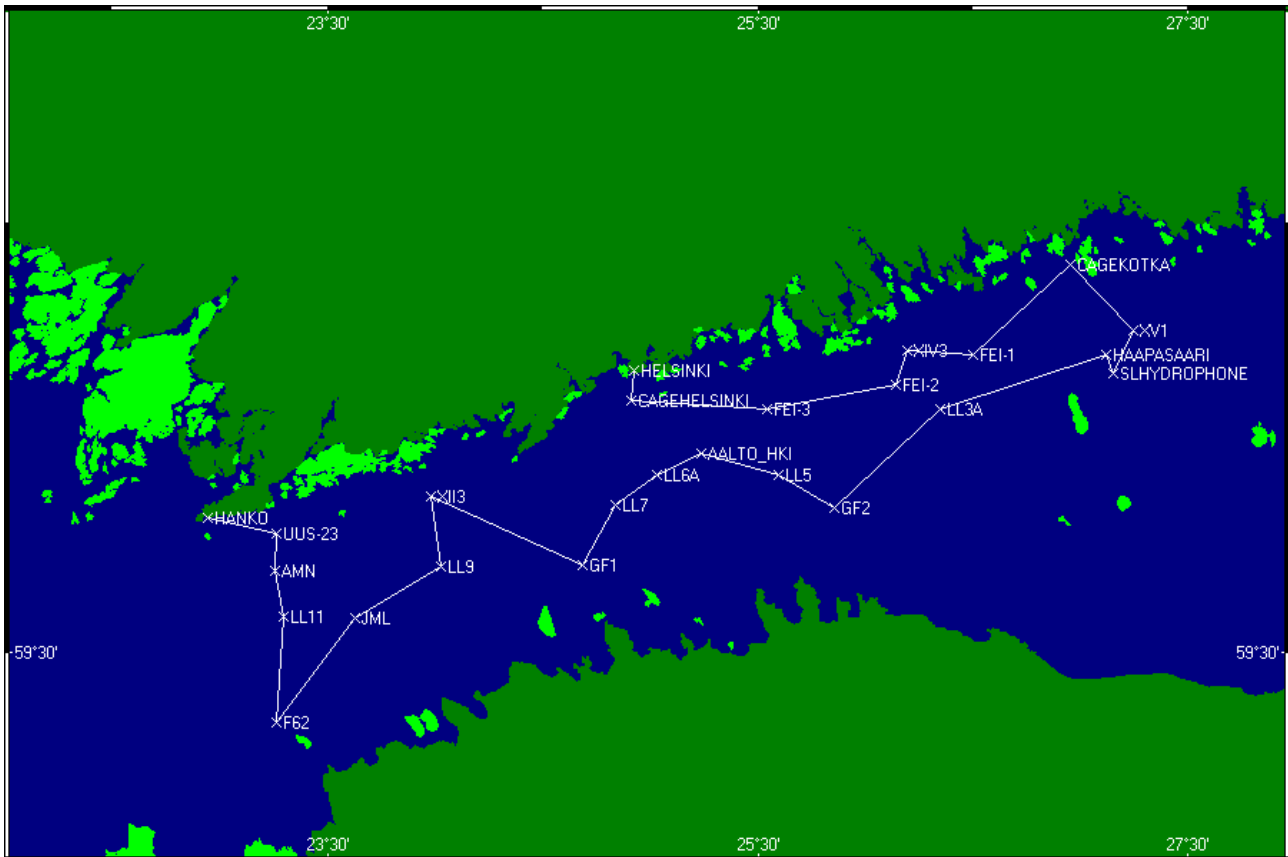
Arrival to: HELSINKI
Arrival time: Saturday 14.08.2021 at 00.21

Duration of the cruise: 3 days 3 h 21 min
Length of the cruise: 283,65 nautical miles
Number of stations 19. Points with name "P" are just route points without observations.

Route:

Nro	Station	Lat.	Long.	Depth [m]	Arrival		Durat. hh:mm	Speed knots	
					hh:mm	dy dd.mm.yyyy			
0	HANKO	59°49.01'	22°56.81'	0	21.00	Tu	10.08.2021	0:00	S 10,0
1	UUS-23	59°46.61'	23°15.77'	60	21.59	Tu	10.08.2021	3:00	S 10,0
2	AMN	59°41.43'	23°15.43'		01.30	We	11.08.2021	1:30	S 10,0
3	LL11	59°35.01'	23°17.81'	68	03.39	We	11.08.2021	1:30	S 10,0
4	F62	59°20.01'	23°15.81'	95	06.39	We	11.08.2021	1:30	S 10,0
5	JML	59°34.91'	23°37.61'	80	10.00	We	11.08.2021	2:00	S 10,0
6	LL9	59°42.01'	24°01.81'	69	13.25	We	11.08.2021	2:00	S 10,0
7	XII3	59°52.01'	23°58.81'	38	16.26	We	11.08.2021	2:00	S 10,0
8	GF1	59°42.30'	24°40.93'	84	20.46	We	11.08.2021	3:00	S 10,0
9	LL7	59°50.79'	24°50.27'	100	00.44	Th	12.08.2021	3:00	S 10,0
10	LL6A	59°55.01'	25°01.81'	75	04.27	Th	12.08.2021	1:30	S 10,0
11	SLVirtausmit	59°58.30'	25°13.56'		06.38	Th	12.08.2021	0:30	S 10,0
12	AALTO_HKI	59°57.90'	25°14.10'	62	07.10	Th	12.08.2021	2:00	S 10,0
13	LL5	59°55.01'	25°35.82'	70	10.18	Th	12.08.2021	1:30	S 10,0
14	GF2	59°50.31'	25°51.41'	84	12.43	Th	12.08.2021	2:00	S 10,0
15	LL3A	60°04.03'	26°20.80'	68	16.43	Th	12.08.2021	3:00	S 10,0
16	HAAPASAARI	60°11.59'	27°06.95'	66	22.09	Th	12.08.2021	1:30	S 10,0
17	SLHYDROPHONE	60°08.99'	27°08.91'		23.55	Th	12.08.2021	4:00	S 10,0
18	XV1	60°15.00'	27°14.82'	64	04.35	Fr	13.08.2021	4:00	S 10,0
19	CAGEKOTKA	60°24.06'	26°57.29'		09.51	Fr	13.08.2021	2:00	S 10,0
20	FEI-1	60°11.62'	26°29.86'	49	13.41	Fr	13.08.2021	1:00	S 10,0
21	XIV3	60°12.19'	26°11.57'	77	15.36	Fr	13.08.2021	2:00	S 10,0
22	FEI-2	60°07.44'	26°08.59'	42	18.06	Fr	13.08.2021	1:00	S 10,0
23	FEI-3	60°04.04'	25°32.63'		20.55	Fr	13.08.2021	1:30	S 10,0
24	HELSINKI	60°09.55'	24°55.37'	0	00.21	Sa	14.08.2021	0:00	S 10,0

Route map:



Cruise plan is printed at 23.06.2021 at 15.48.